

Early Childhood Action Plan

December Workgroup Meeting Pre-Read

Basic Needs Workgroup | Dec 17, 2020 | 3 - 5 PM



Building Upon Existing Research and Recommendations in the Durham ECAP

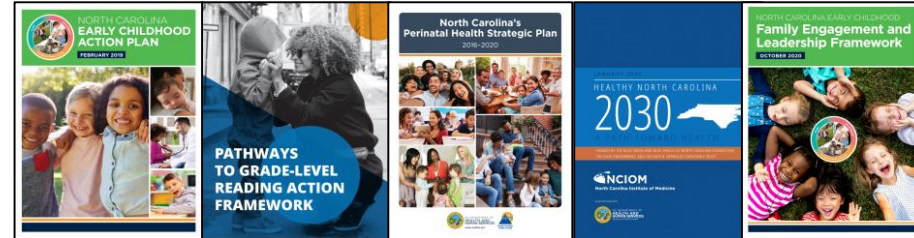
Durham County-Level Recommendations

- State of Durham County's Young Children
- Racial Equity Task Force Report
- Durham County Community Health Assessment



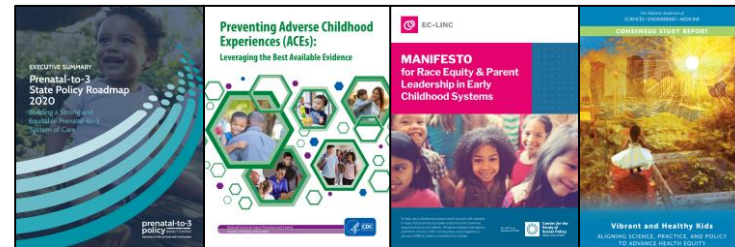
Statewide Recommendations

- Early Childhood Action Plan
- Pathways to Grade-Level Reading Action Framework
- NC Perinatal Health Strategic Plan: 2016-2020
- Healthy North Carolina 2030
- Family Engagement and Leadership Framework



National Recommendations

- Prenatal-to-3 State Policy Roadmap 2020
- CDC Preventing Adverse Childhood Experiences
- Center for the Study of Social Policy's Manifesto for Race Equity and Parent Leadership in Early Childhood Systems
- Vibrant and Healthy Kids: Aligning Science, Practice, and Policy to Advance Health Equity



Considerations and Limitations

- This opportunity to review existing recommendations will provide us with initial direction to see where we should focus our attention
- We may not yet know how much effort it will take to implement or the value that each recommendation could create; the information you shared is an initial “pulse check”
- The workgroups will be prioritizing recommendations further over the course of the next several meetings to decide which recommendations to move forward into action planning
- In parallel, parents and community members are proposing recommendations and ideas for Durham that will be uplifted accordingly for action planning
- Specific, concrete action plans for the Durham ECAP will be built out February – May

Potential Strategies: *Essential Family Supplies*

N = 19

Potential Recommendation to Consider	% Who Responded "Yes" This Recommendation Should be Included	Weighted Prioritization*	Average Effort	Average Value
Ensure families have access to essential supplies such as car seats, diapers, beds, clothing, bottles, breast pumps, etc.	78%	HIGH	MED	HIGH
Align services providing "family essentials" with providers working with families (like health care providers, home visitors, and childcare providers) to more quickly and more efficiently meet the needs of families.	78%	HIGH	MED	MED-HIGH
Provide timely education in tandem with the provision of family essentials, for example educating families about the proper installation of car seats for them to be effective.	72%	MED-HIGH	MED	MED-HIGH

*The weighted prioritization score takes into account both the percentage of respondents who indicated this recommendation should be included and the prioritization

Potential Strategies: Access to Healthy and Affordable Foods

N = 19

Potential Recommendation to Consider	% Who Responded "Yes" This Recommendation Should be Included	Weighted Prioritization*	Average Effort	Average Value
Expand access to food services for families in need who are not eligible for public assistance programs	78%	MED-HIGH	MED	HIGH
Increase access to healthy, culturally-relevant foods for families experiencing food insecurity	78%	MED-HIGH	MED	MED-HIGH
Expand access to healthy foods in schools and childcare settings	72%	MED-HIGH	MED	MED-HIGH
Engage with local Black and Latin(a)(o)(x) owned farms, restaurants, and other organizations to supply healthy food to communities with low healthy food availability and access.	78%	MED-HIGH	MED	MED-HIGH
Expand opportunities for young children to access breakfast and after-school meals during the traditional school year, as well as opportunities to receive meals on weekends and school breaks.	83%	MED-HIGH	MED-HIGH	HIGH
Improve public awareness of healthy food options	83%	MED	MED	MED

*The weighted prioritization score takes into account both the percentage of respondents who indicated this recommendation should be included and the prioritization

Potential Strategies: *Infrastructure and Capacity-building for Food Supports*

N = 19

Potential Recommendation to Consider	% Who Responded "Yes" This Recommendation Should be Included	Weighted Prioritization*	Average Effort	Average Value
Strengthen funding and access to the Special Supplemental Nutrition Program for Women, Infants, and Children (WIC)	67%	MED	HIGH	MED-HIGH
Increase technological support for Supplemental Nutrition Assistance Program/Electronic Benefits Transfer payments at food retailers	67%	MED	MED	MED
Support tax-incentive programs designed to encourage grocery stores and farmers markets to move into food deserts	72%	MED-HIGH	MED-HIGH	HIGH
Support nonprofit grocery stores working to meet the needs of residents of food deserts.	78%	MED	MED-HIGH	MED-HIGH
Make it easier for eligible families to enroll in supplemental food and nutrition benefits programs, especially during times of disaster and recovery	83%	HIGH	MED	HIGH
Promote better data collection and data sharing of child food insecurity data to better understand who needs food and where those children are	78%	MED-HIGH	MED	MED-HIGH

*The weighted prioritization score takes into account both the percentage of respondents who indicated this recommendation should be included and the prioritization

Potential Strategies: Affordable Housing

N = 19

Potential Recommendation to Consider	% Who Responded "Yes" This Recommendation Should be Included	Weighted Prioritization*	Average Effort	Average Value
Advocate for state legislation that would help address the affordable housing crisis (e.g. density bonuses, inclusionary zoning, mandatory affordable housing construction for private developers)	72%	MED-HIGH	HIGH	HIGH
Expand access to housing supports for families in need who are not eligible for public assistance programs	78%	HIGH	HIGH	HIGH
Provide mortgage and public rent relief	72%	HIGH	HIGH	HIGH
Engage the entire community to make affordable housing a priority	83%	MED-HIGH	MED	MED-HIGH
Preserve and expand affordable rental housing with a focus on households, particularly those with young children, below 50% of Area Mean Income (AMI)	78%	HIGH	HIGH	HIGH
Promote long-term affordability in historically Black and low-income neighborhoods	83%	HIGH	MED-HIGH	MED-HIGH

*The weighted prioritization score takes into account both the percentage of respondents who indicated this recommendation should be included and the prioritization

Potential Strategies: *Safe and Secure Housing*

N = 19

Potential Recommendation to Consider	% Who Responded "Yes" This Recommendation Should be Included	Weighted Prioritization*	Average Effort	Average Value
Track the race and gender of those facing eviction (and how old their children are) in the city and county.	72%	MED	MED	MED-HIGH
Create a universal right to counsel for those facing eviction	78%	MED-HIGH	HIGH	MED-HIGH
Build capacity for smaller, community-based housing and homelessness nonprofits to scale existing services	67%	MED-HIGH	MED	MED-HIGH
Reduce childhood exposure to lead in Durham County	83%	HIGH	MED	HIGH
Identify and engage youth at risk for, or actually experiencing, homelessness and connect them with trauma-informed, culturally appropriate, and developmentally and age-appropriate interventions.	72%	HIGH	HIGH	HIGH
Ensure access to safe shelter and emergency services, prioritizing families with young children.	83%	HIGH	HIGH	HIGH

*The weighted prioritization score takes into account both the percentage of respondents who indicated this recommendation should be included and the prioritization

Potential Strategies: *Family Economic Security Advocacy*

N = 19

Potential Recommendation to Consider	% Who Responded "Yes" This Recommendation Should be Included	Weighted Prioritization*	Average Effort	Average Value
Advocate for state- and federal-level family economic security policies, including reparations, universal basic income, paid family and sick leave, reinstatement of the earned income tax credit, and an increase to the minimum wage.	78%	MED-HIGH	HIGH	HIGH
Advocate for a TANF Work Exemption that exempts single- parent head of household from work- related activity if caring for a child under 12 months old	72%	MED	MED-HIGH	MED
Advocate for local, state, and/or federal policy changes that address the benefits cliff.	83%	HIGH	MED-HIGH	MED-HIGH
Advocate for a federally funded Baby Bond policy which would set up trust accounts for every newborn infant.	61%	MED	HIGH	MED-HIGH

*The weighted prioritization score takes into account both the percentage of respondents who indicated this recommendation should be included and the prioritization

Potential Strategies: *Family Economic Security Supports*

N = 19

Potential Recommendation to Consider	% Who Responded "Yes" This Recommendation Should be Included	Weighted Prioritization*	Average Effort	Average Value
Expand supports for universal, affordable high quality child-care, especially for infants and toddlers	83%	HIGH	MED-HIGH	HIGH
Develop local pilot of universal basic income for people who are pregnant and/or parents of young children	61%	MED-HIGH	MED	MED
Create or improve access to Career Pathways for parents of young children	67%	MED-HIGH	MED	MED-HIGH
Leverage opportunities for two-generation approaches (workforce development/connection to living wage jobs paired with early childhood education or other child development-related supports)	67%	MED	HIGH	MED-HIGH
Create family-friendly workplace policies and ensure that low-wage, part-time, and seasonal or occasional workers have access to these policies. Examples may include paid sick leave, parental leave, or reliable/fair work schedules.	72%	HIGH	MED-HIGH	HIGH
Invest in community-based, peer navigators to support access to basic needs supports.	78%	MED-HIGH	MED	MED

*The weighted prioritization score takes into account both the percentage of respondents who indicated this recommendation should be included and the prioritization

Potential Strategies: *Family Engagement and Leadership (All Workgroups)*

N = 58

Potential Recommendation to Consider	% Who Responded "Yes" This Recommendation Should be Included	Weighted Prioritization*	Average Effort	Average Value
Invest in family education about how to understand and navigate through child and family systems, and be an advocate for their own and their children's needs at child care, in school, and in health care settings	76%	HIGH	MED-HIGH	HIGH
Develop parent leadership and advocacy, including staffing and staff development; support for families' full participation; and ongoing leadership development in ongoing early childhood systems work	71%	HIGH	MED-HIGH	HIGH
Promote two-way, relationship-based interactions between families and birth-to-five professionals sharing information and working together to build each other's knowledge and skills	69%	MED	MED	MED-HIGH
Promote NCCARE 360 to families and community and encourage agencies to enroll. Consistently update the list of local family-focused programs and help other families access that information by linking to other agencies' websites.	73%	MED	MED	MED
Promote agency and community coordination in providing services	76%	HIGH	MED	HIGH
Improve family and community driven service provision	75%	MED-HIGH	MED-HIGH	MED
Educate and train parents on advocacy and engagement in systems in which they are unfamiliar	80%	HIGH	MED	HIGH
Educate parents about the benefit of engagement in the early childhood systems	67%	MED	MED	MED

*The weighted prioritization score takes into account both the percentage of respondents who indicated this recommendation should be included and the prioritization

Potential Strategies: *Early Childhood Cross-Systems Level (All Workgroups)*

N = 58

Potential Recommendation to Consider	% Who Responded "Yes" This Recommendation Should be Included	Weighted Prioritization*	Average Effort	Average Value
Address barriers to data collection across agencies and age groups so that community stakeholders can continue to identify the areas of greatest need and to track progress in these areas that have been identified as a focus	80%	HIGH	HIGH	MED
Support the adoption of an aligned entry portal to facilitate service awareness, referrals, and cross-agency coordination	69%	MED-HIGH	MED-HIGH	MED-HIGH
Create data sharing agreements across sectors (non-profit, government, Durham Public Schools, etc.) with a cost-benefit model for all partners.	67%	MED	HIGH	MED
Promote a diverse workforce of child- and family-facing providers across sectors	80%	HIGH	MED-HIGH	HIGH
Promote high-quality training about institutional and structural racism and its impact on poor communities and communities of color	87%	HIGH	MED	HIGH
Promote community and systems dialog and discussion on racism	78%	HIGH	MED	MED-HIGH
Join with and invest in parent- and community-based organizations to support their ideas and priorities	78%	MED-HIGH	MED	HIGH

*The weighted prioritization score takes into account both the percentage of respondents who indicated this recommendation should be included and the prioritization

Additional Recommendations or Considerations Provided by Respondents

- Considerations for Recommendations
 - “Invest in strategies (including child care, transportation, stipends, non-traditional class schedules, etc.) that support student parents in completion of their postsecondary, vocational education.”
 - “Reparations to the Black community. Build wealth and hope.”
- Considerations for Action Planning
 - “If we decide to do screenings, we should consider how to make them universal.”
 - “Labeling more children or parents as having problems and needing help is counter-productive. Provide services to all without labeling/pathologizing.”
 - “Early interventions include academic, social-emotional, language-based, developmental, etc.”
 - “Send resources and technical support to community rooted leaders. In thinking about funding community led solutions, eliminate RFPs that are barriers to funding.”
 - “Pay people who are deeply community rooted to gather the assets, metrics, timetables, budgets, and recommendations for their respective communities.”
 - “Prioritize the most vulnerable and affected communities/populations.”
 - “Need to bring as many community folks to the implementation table as possible.”