

GROWN IN DURHAM

Durham's Early Childhood Action Plan (ECAP)

Grown in Durham is a community of families, advocates, community leaders, and early childhood providers working together, to make Durham a place where **all** children from birth through 8 can **THRIVE**.



Thriving villages



Thriving caregivers



Thriving learners

OUR WORK BEGINS WITH THE "5 TO THRIVE"



Places where families are welcomed and connected with early childhood services through peer support.



Cash payments to families with young children.



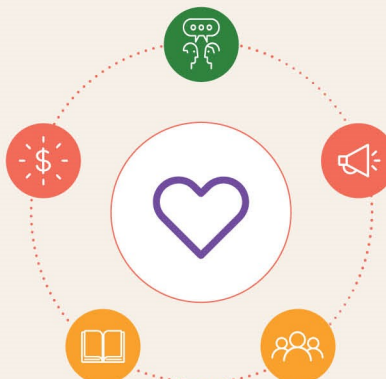
Campaign and advocacy focused on sustainability of early care and education (ECE) – both to reduce costs for families & increase teacher compensation.



Community education about developmentally appropriate, affirming, inclusive child care.



Social-emotional health of our children at home and in schools.



**SCAN HERE TO LEARN
HOW YOU CAN HELP:**

<https://bit.ly/GrowninDurham>